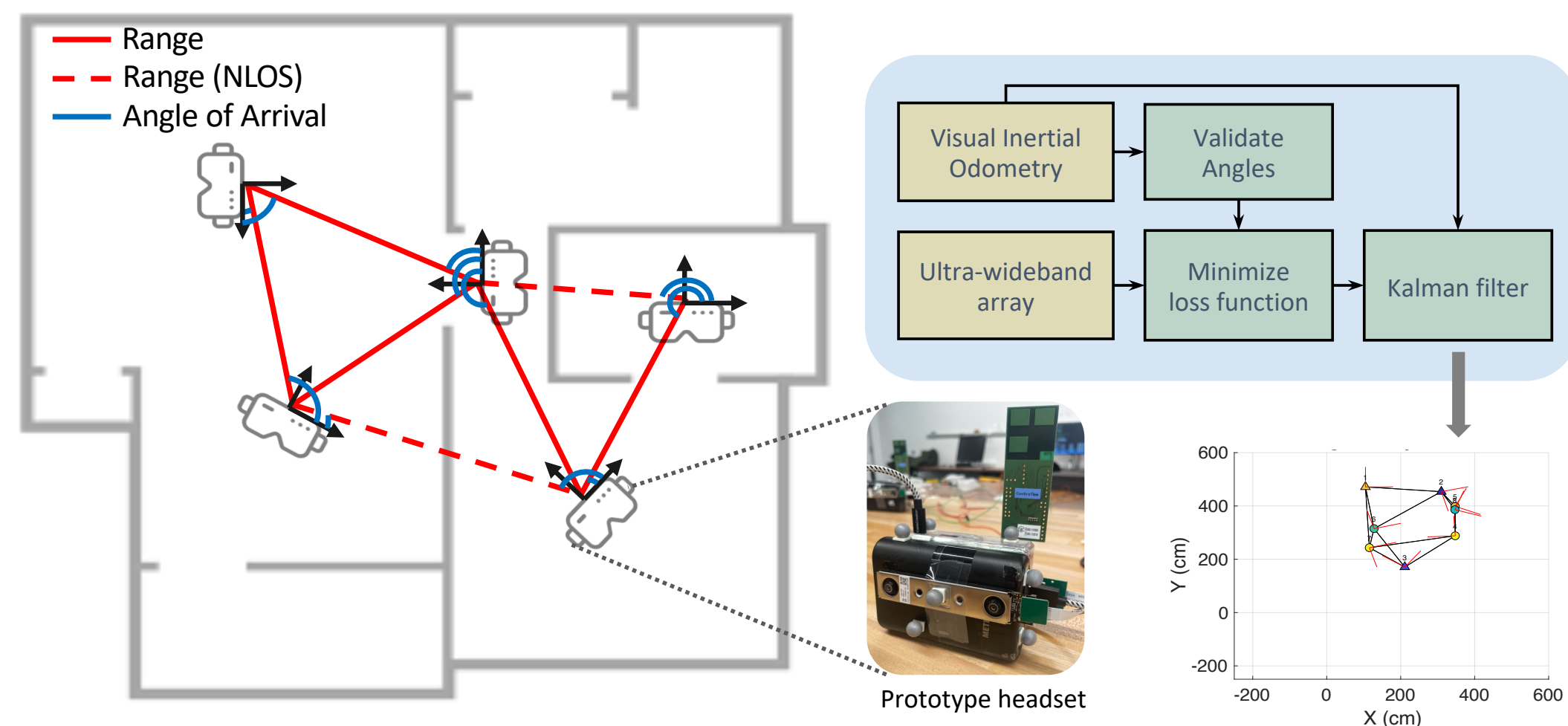
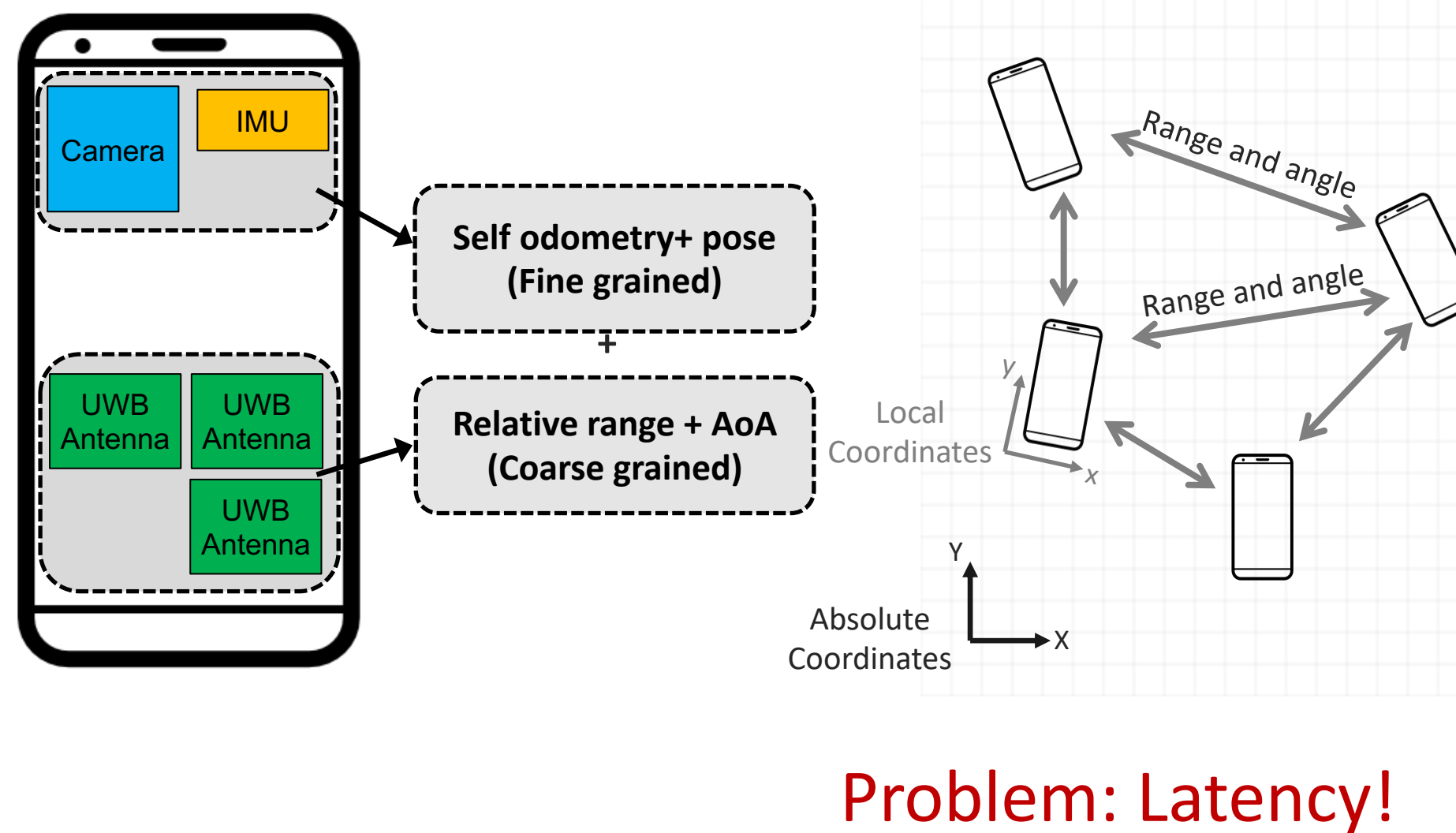


Concept overview

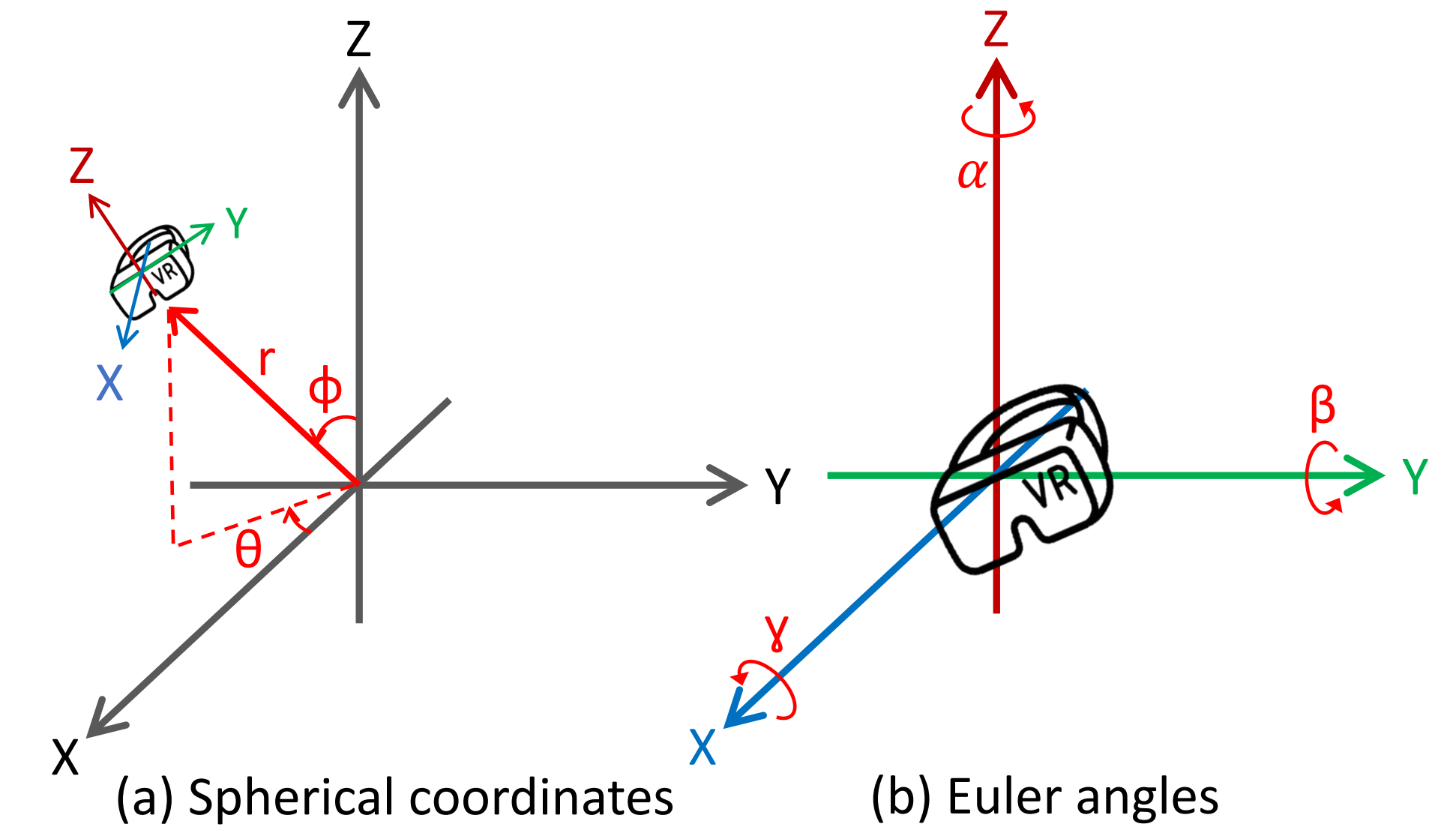


Topology optimization



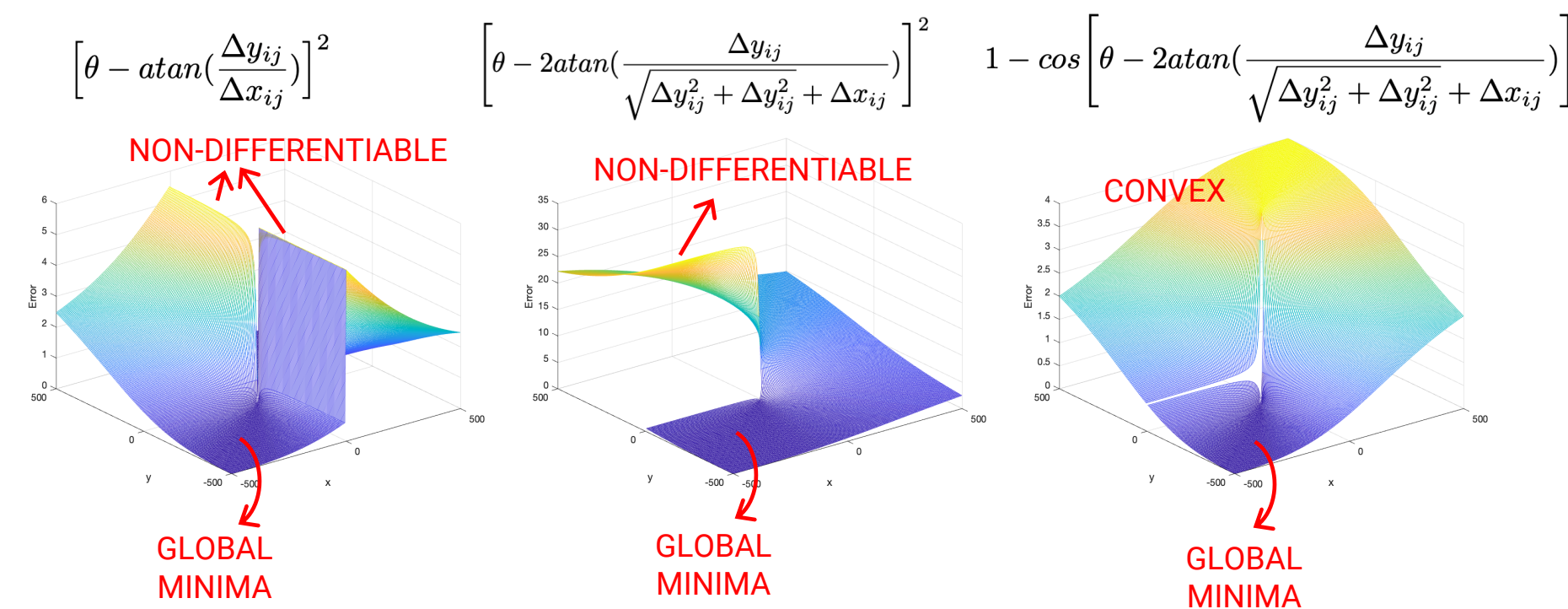
Problem: Latency!

6 Degrees of freedom



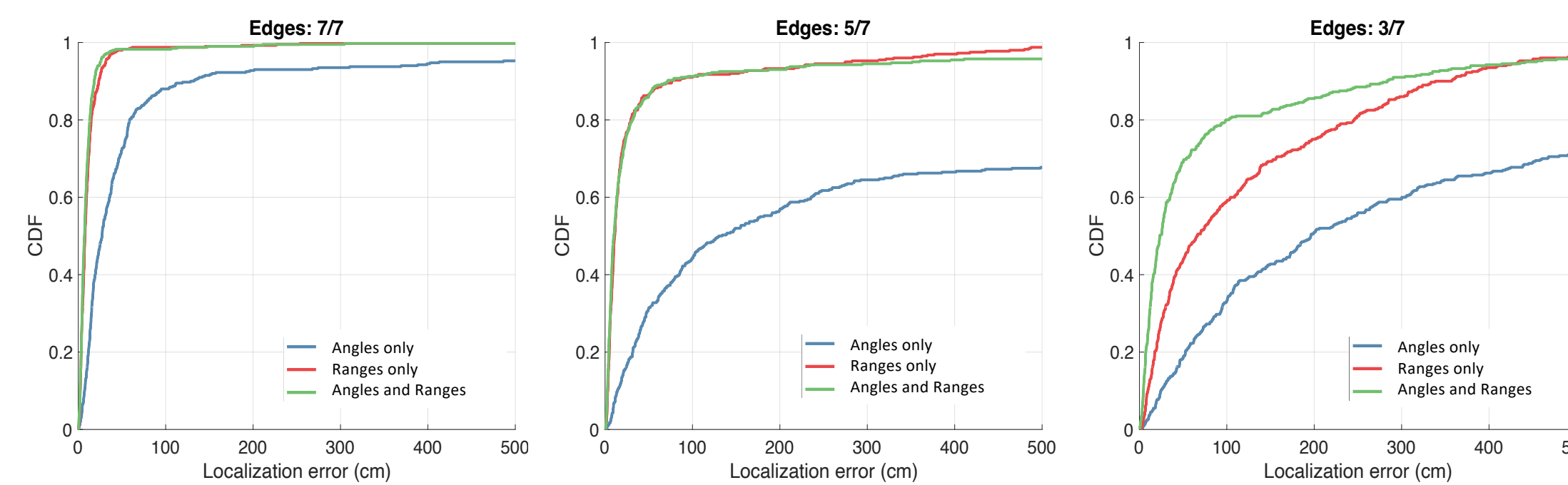
Incorporating angles

Including angles is non-trivial because the loss function becomes highly non-convex.



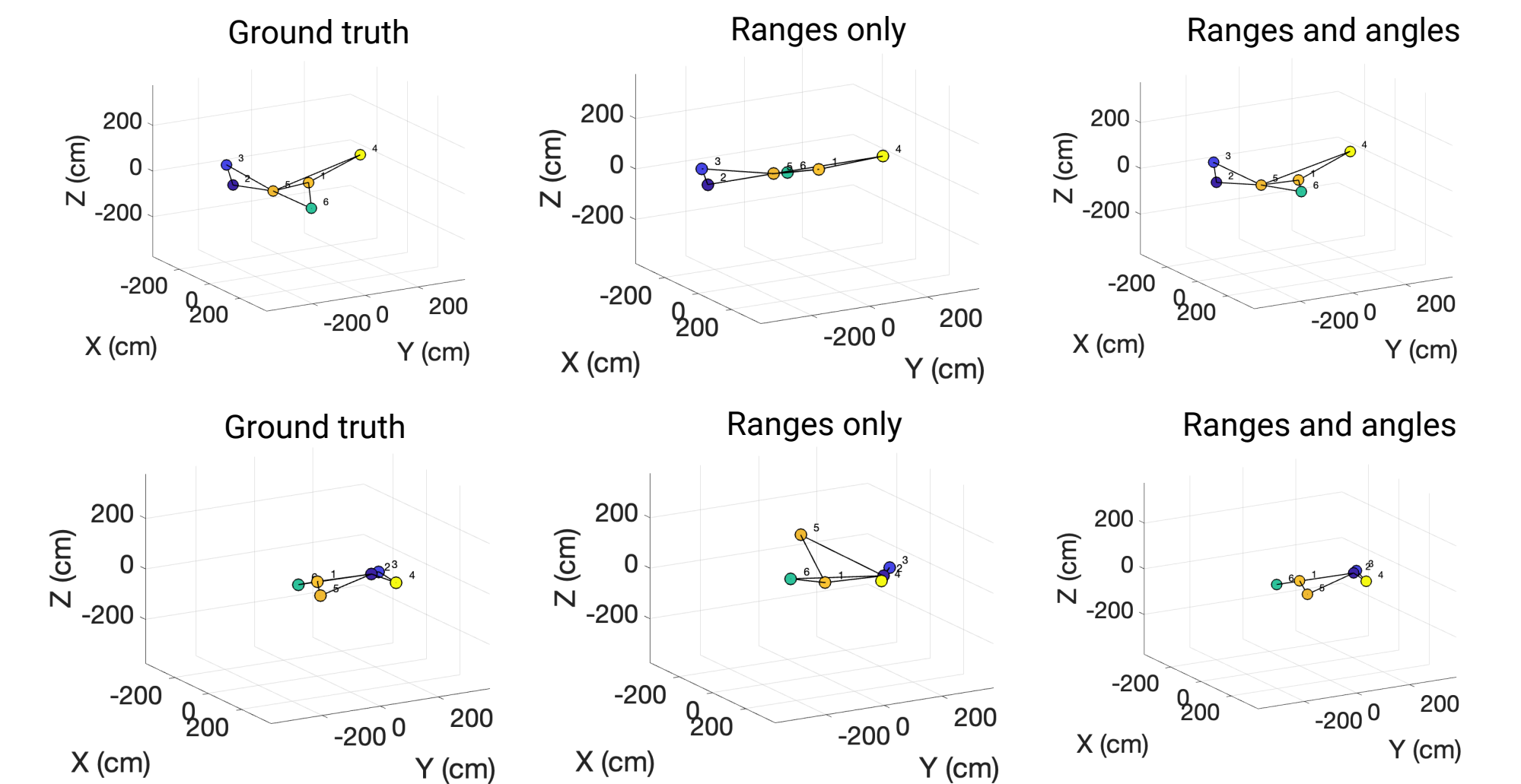
$$\min_X \sum_i \sum_j w_{ij} (\hat{d}_{ij} - d_{ij}(X))^2 + w'_{ij} (1 - \cos(\hat{\theta}_{ij} - \theta_{ij}(X)))$$

Edge-selection to minimize latency



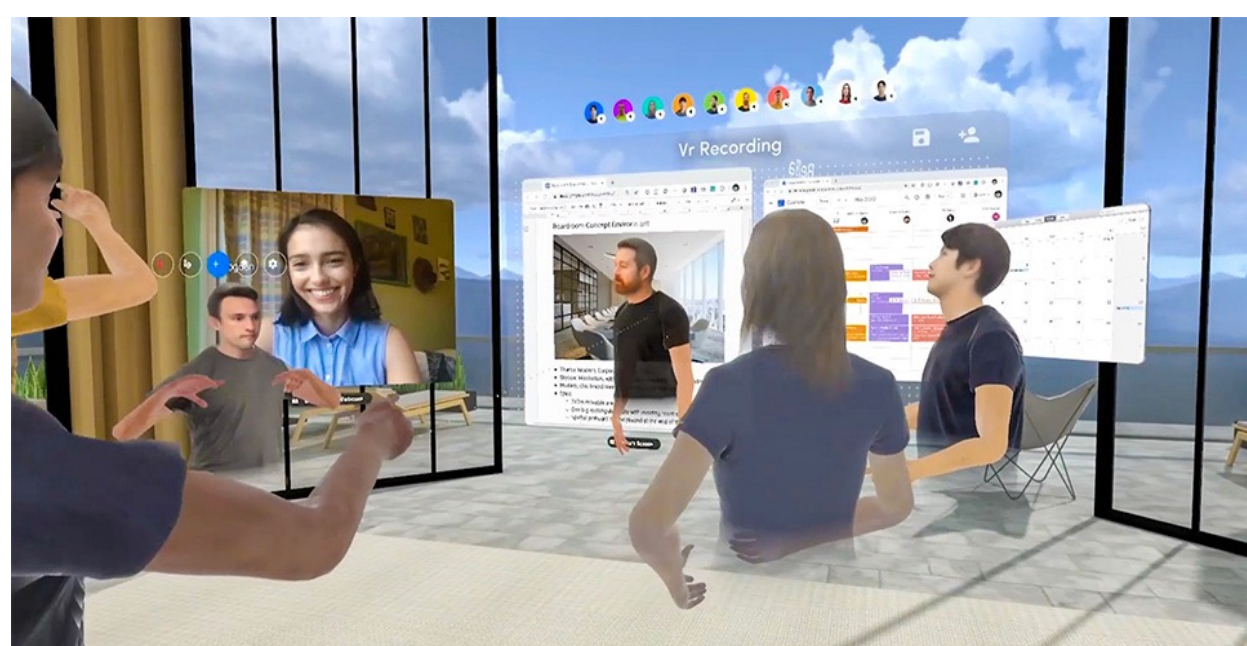
- Adding angular information to the measurements doesn't take extra time
- It adds an additional layer of constraint to the topology

Results



Applications

Users sharing AR space



Grocery shopping



Human robot collaboration



Education

